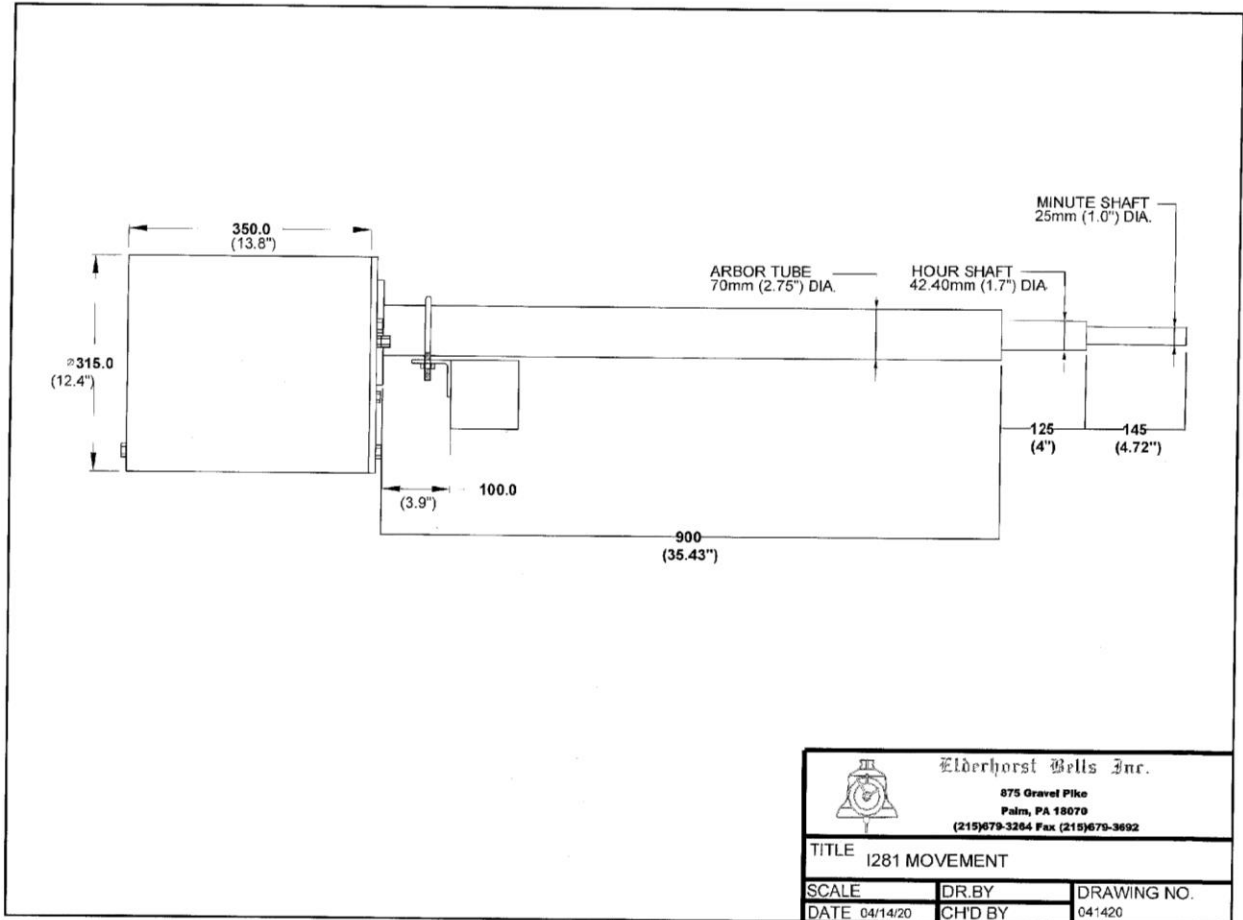




Elderhorst Bells, Inc.

**I281 STYLE CLOCK MOVEMENT – FOR CLOCK DIAMETERS TO 4.0M
(157" DIAMETER)**



**ALL MEASUREMENTS SHOWN IN MM
"ARBOR" LENGTH DEPENDENT ON APPLICATION
CLOCK DIAL TO BE PROVIDED WITH ADDITIONAL ARBOR SUPPORT**

One I281 clock drive movement required for each clock face. The I281 clock movements are built on a composite frame in a maintenance free design. The movements are driven by a 120 Volt, 60 hz, high-torque motor which is activated by the impulse type clock controller at minute intervals.

Clock movement requires minute impulse type clock controller such as the "Campa" Apollo III, Tempora, or Tempus (EB-200 Series clock controller for operation.